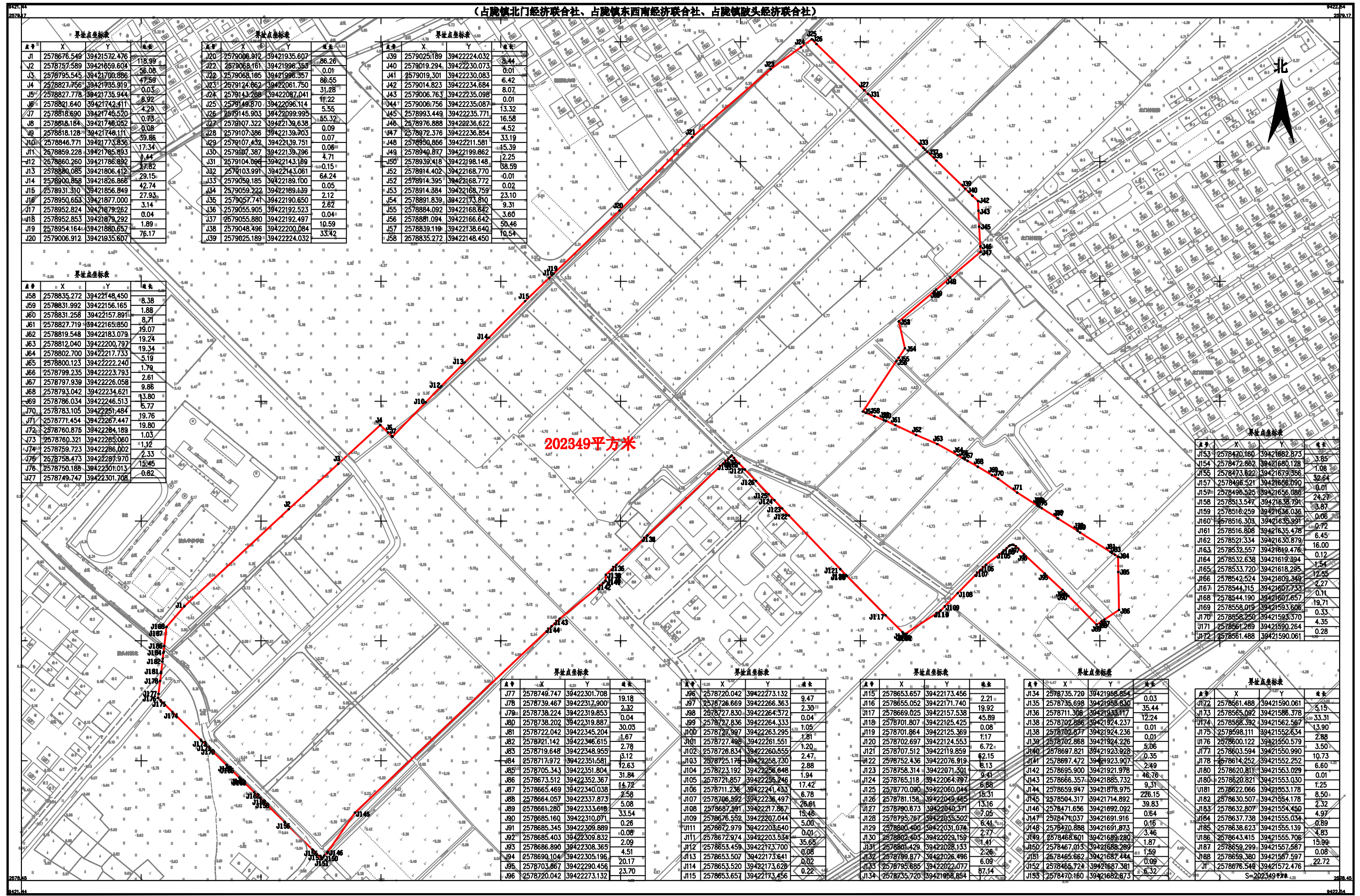


# 普宁市2023年度第三十二批次城镇建设用地图

(占陇镇北门经济合作社、占陇镇东南经济合作社、占陇镇墩头经济合作社)



普宁市自然资源测绘队

2023年11月全野外数字化成图。  
 2000国家大地坐标系。  
 1985国家高程基准，等高距为1米。  
 GB/T20257.1-2007国家基本比例尺地图图式 第1部分：1: 500 1: 1000 1: 2000地形图图式。

1:3000

点号	X	Y	长度
J153	2578420.160	39421882.873	3.85
J154	2578472.862	39421680.128	1.08
J155	2578473.822	39421679.356	32.64
J157	2578496.521	39421656.090	24.27
J157	2578496.525	39421656.088	0.01
J158	2578513.547	39421638.791	8.87
J159	2578516.259	39421636.036	0.06
J160	2578516.303	39421635.991	0.72
J161	2578516.808	39421635.478	6.45
J162	2578521.334	39421630.879	16.00
J163	2578532.557	39421619.476	0.12
J164	2578532.638	39421619.394	1.54
J165	2578533.720	39421618.295	12.55
J166	2578542.524	39421609.349	2.27
J167	2578544.115	39421607.733	0.11
J168	2578544.190	39421607.657	19.71
J169	2578558.019	39421593.606	0.33
J170	2578558.250	39421593.370	4.35
J171	2578561.289	39421590.264	0.28
J172	2578561.488	39421590.061	

点号	X	Y	长度
J77	2578749.747	39422301.708	19.18
J78	2578739.467	39422317.900	2.32
J79	2578738.224	39422319.853	0.04
J80	2578738.202	39422319.887	30.03
J81	2578722.042	39422345.204	1.67
J82	2578721.142	39422346.615	2.78
J83	2578719.648	39422348.955	3.12
J84	2578717.972	39422351.581	12.63
J85	2578705.343	39422351.804	31.84
J86	2578673.512	39422352.367	14.72
J87	2578665.469	39422340.038	2.58
J88	2578664.057	39422337.873	5.08
J89	2578661.280	39422333.618	33.54
J90	2578685.160	39422310.071	0.26
J91	2578685.345	39422309.889	-0.08
J92	2578685.403	39422309.832	2.09
J93	2578686.890	39422308.365	4.51
J94	2578690.104	39422305.196	20.17
J95	2578703.867	39422290.456	23.70
J96	2578720.042	39422273.132	

点号	X	Y	长度
J96	2578720.042	39422273.132	9.47
J97	2578726.669	39422266.363	2.30
J98	2578727.830	39422264.372	0.04
J99	2578727.836	39422264.333	1.05
J100	2578727.997	39422263.295	1.81
J101	2578727.498	39422261.551	1.20
J102	2578726.834	39422260.555	2.47
J103	2578725.178	39422258.730	2.88
J104	2578723.192	39422256.648	1.94
J105	2578721.857	39422255.246	17.42
J106	2578711.238	39422241.433	6.78
J107	2578706.592	39422236.497	26.61
J108	2578687.591	3942217.867	15.46
J109	2578676.552	39422207.044	5.00
J110	2578672.979	39422203.540	0.01
J111	2578672.974	39422203.534	35.65
J112	2578653.458	39422173.700	0.08
J113	2578653.507	39422173.641	0.02
J114	2578653.520	39422173.628	0.22
J115	2578653.657	39422173.456	

点号	X	Y	长度
J115	2578653.657	39422173.456	2.21
J116	2578655.052	39422171.740	19.92
J117	2578669.025	39422157.538	45.89
J118	2578701.807	39422125.425	0.08
J119	2578701.864	39422125.369	1.17
J120	2578702.697	39422124.553	6.72
J121	2578707.512	39422119.859	62.15
J122	2578752.436	39422076.919	8.13
J123	2578758.314	39422071.301	9.41
J124	2578765.118	39422064.797	6.88
J125	2578770.090	39422060.044	15.31
J126	2578781.158	39422049.465	13.16
J127	2578790.673	39422040.371	7.05
J128	2578795.767	39422035.502	6.44
J129	2578800.400	39422031.078	2.77
J130	2578802.405	39422029.159	1.41
J131	2578801.429	39422028.133	2.26
J132	2578799.877	39422026.496	6.09
J133	2578795.685	39422022.077	87.14
J134	2578735.720	39421988.854	

点号	X	Y	长度
J134	2578735.720	39421988.854	0.03
J135	2578735.698	39421988.830	35.44
J136	2578711.306	39421933.117	12.24
J138	2578702.886	39421924.237	0.01
J138	2578702.877	39421924.236	0.01
J139	2578702.868	39421924.226	5.06
J140	2578697.821	39421923.928	0.35
J141	2578697.472	39421923.907	2.49
J142	2578695.900	39421921.978	46.76
J143	2578666.357	39421885.732	9.31
J144	2578659.947	39421878.975	226.15
J145	2578594.317	39421714.892	39.83
J146	2578471.656	39421692.092	0.64
J147	2578471.037	39421691.916	0.16
J148	2578470.888	39421691.873	3.46
J149	2578468.601	39421689.280	1.87
J150	2578467.013	39421688.289	1.59
J151	2578465.662	39421687.444	0.09
J152	2578465.724	39421687.381	6.32
J153	2578470.160	39421682.873	

点号	X	Y	长度
J172	2578561.488	39421590.061	5.15
J173	2578565.092	39421586.378	33.31
J174	2578568.392	39421562.567	13.90
J175	2578598.111	39421552.634	2.88
J176	2578600.122	39421550.579	3.50
J177	2578603.594	39421550.990	10.73
J178	2578614.252	39421552.252	6.60
J180	2578620.811	39421553.029	0.01
J180	2578620.821	39421553.030	1.25
J181	2578622.066	39421553.178	8.20
J182	2578630.507	39421557.587	1.85
J183	2578632.807	39421554.450	4.97
J184	2578637.738	39421555.034	0.89
J185	2578638.623	39421555.139	4.83
J186	2578643.415	39421555.706	15.90
J187	2578659.299	39421557.587	0.08
J188	2578659.548	39421572.476	22.72

S=202349.77#