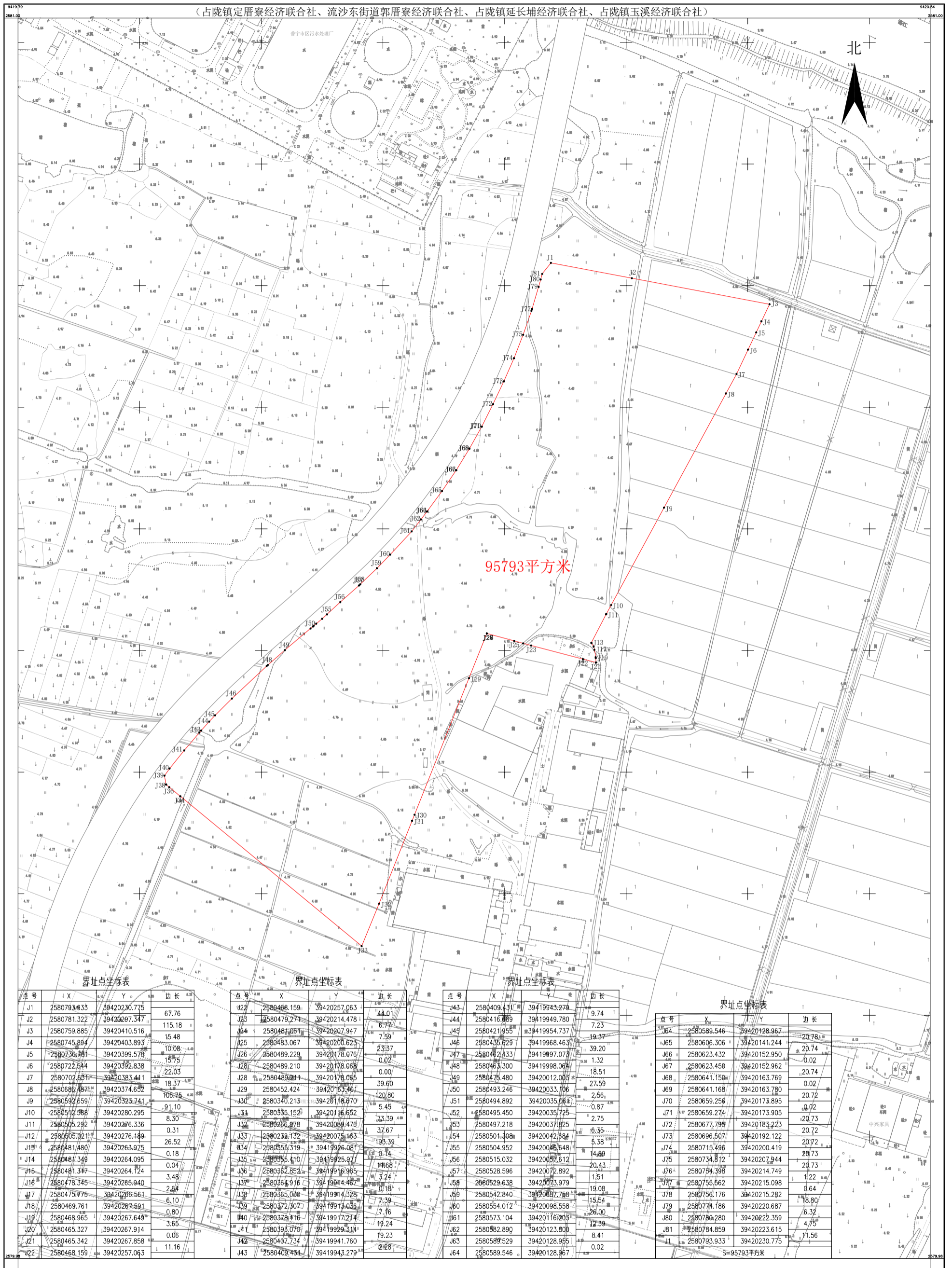


# 普宁市2023年度第三十四批次城镇建设用地图

(占陇镇定厝寮经济合作社、流沙东街道郭厝寮经济合作社、占陇镇延长埔经济合作社、占陇镇玉溪经济合作社)



普宁市自然资源测绘队

点号	X	Y	边长
J1	2580793.933	39420230.775	67.76
J2	2580781.322	39420297.347	115.18
J3	2580759.885	39420410.516	15.48
J4	2580745.894	39420403.893	10.08
J5	2580736.761	39420399.578	15.75
J6	2580722.544	39420392.838	22.03
J7	2580702.651	39420383.441	18.37
J8	2580686.487	39420374.652	106.75
J9	2580597.659	39420323.741	91.10
J10	2580512.588	39420280.295	8.30
J11	2580505.292	39420276.336	0.31
J12	2580505.021	39420276.489	26.52
J13	2580481.480	39420263.975	0.18
J14	2580481.349	39420264.095	0.04
J15	2580481.317	39420264.124	3.48
J16	2580478.345	39420265.940	2.64
J17	2580475.775	39420266.561	6.10
J18	2580469.761	39420267.591	0.80
J19	2580468.965	39420267.649	3.65
J20	2580465.327	39420267.914	0.06
J21	2580465.342	39420267.858	11.16
J22	2580468.159	39420257.063	

点号	X	Y	边长
J23	2580468.159	39420257.063	44.01
J24	2580479.271	39420214.478	6.77
J25	2580481.061	39420207.947	7.59
J26	2580483.067	39420200.623	23.37
J27	2580489.229	39420178.076	0.02
J28	2580489.210	39420178.068	0.00
J29	2580452.424	39420163.461	39.60
J30	2580340.213	39420118.670	120.80
J31	2580335.152	39420116.652	5.45
J32	2580266.978	39420089.478	73.39
J33	2580232.132	39420075.163	37.67
J34	2580355.319	39419926.081	195.39
J35	2580355.410	39419925.971	0.14
J36	2580362.852	39419916.965	1.668
J37	2580364.916	39419914.467	3.24
J38	2580365.060	39419914.328	0.18
J39	2580372.307	39419913.036	7.39
J40	2580378.116	39419917.214	7.16
J41	2580393.070	39419929.314	19.24
J42	2580407.734	39419941.760	19.23
J43	2580409.431	39419943.279	2.28

点号	X	Y	边长
J44	2580409.431	39419943.279	9.74
J45	2580416.889	39419949.780	7.23
J46	2580421.955	39419954.737	19.37
J47	2580424.433	39419997.073	39.20
J48	2580463.300	39419998.094	1.32
J49	2580475.480	39420012.003	18.51
J50	2580493.246	39420033.106	27.59
J51	2580494.892	39420035.061	2.56
J52	2580495.450	39420035.725	0.87
J53	2580497.218	39420037.825	2.75
J54	2580501.309	39420042.684	6.35
J55	2580504.952	39420046.648	5.38
J56	2580515.032	39420057.612	14.89
J57	2580528.596	39420072.892	20.43
J58	2580529.638	39420073.979	1.51
J59	2580542.840	39420087.768	19.08
J60	2580554.012	39420098.558	15.54
J61	2580573.104	39420116.203	26.00
J62	2580582.890	39420123.800	12.39
J63	2580589.529	39420128.955	8.41
J64	2580589.546	39420128.967	0.02

点号	X	Y	边长
J64	2580589.546	39420128.967	20.78
J65	2580606.306	39420141.244	20.74
J66	2580623.432	39420152.950	0.02
J67	2580623.450	39420152.962	20.74
J68	2580641.150	39420163.769	0.02
J69	2580641.168	39420163.780	20.72
J70	2580659.256	39420173.895	0.02
J71	2580659.274	39420173.905	20.73
J72	2580677.795	39420183.223	20.72
J73	2580696.507	39420192.122	20.72
J74	2580715.496	39420200.419	20.73
J75	2580734.812	39420207.944	20.73
J76	2580754.398	39420214.749	1.22
J77	2580755.562	39420215.098	0.64
J78	2580756.176	39420215.282	18.80
J79	2580774.186	39420220.687	6.32
J80	2580780.280	39420222.359	4.75
J81	2580784.859	39420223.615	11.56
J132	2580793.933	39420230.775	

界址点坐标表

S=95793平方米

2023年11月全野外数字化成图。  
2000国家大地坐标系。  
1985国家高程基准，等高距为1米。  
GB/T20257.1-2007国家基本比例尺地图图式  
第1部分：1: 500 1: 1000 1: 2000地形图图式。

1:3000