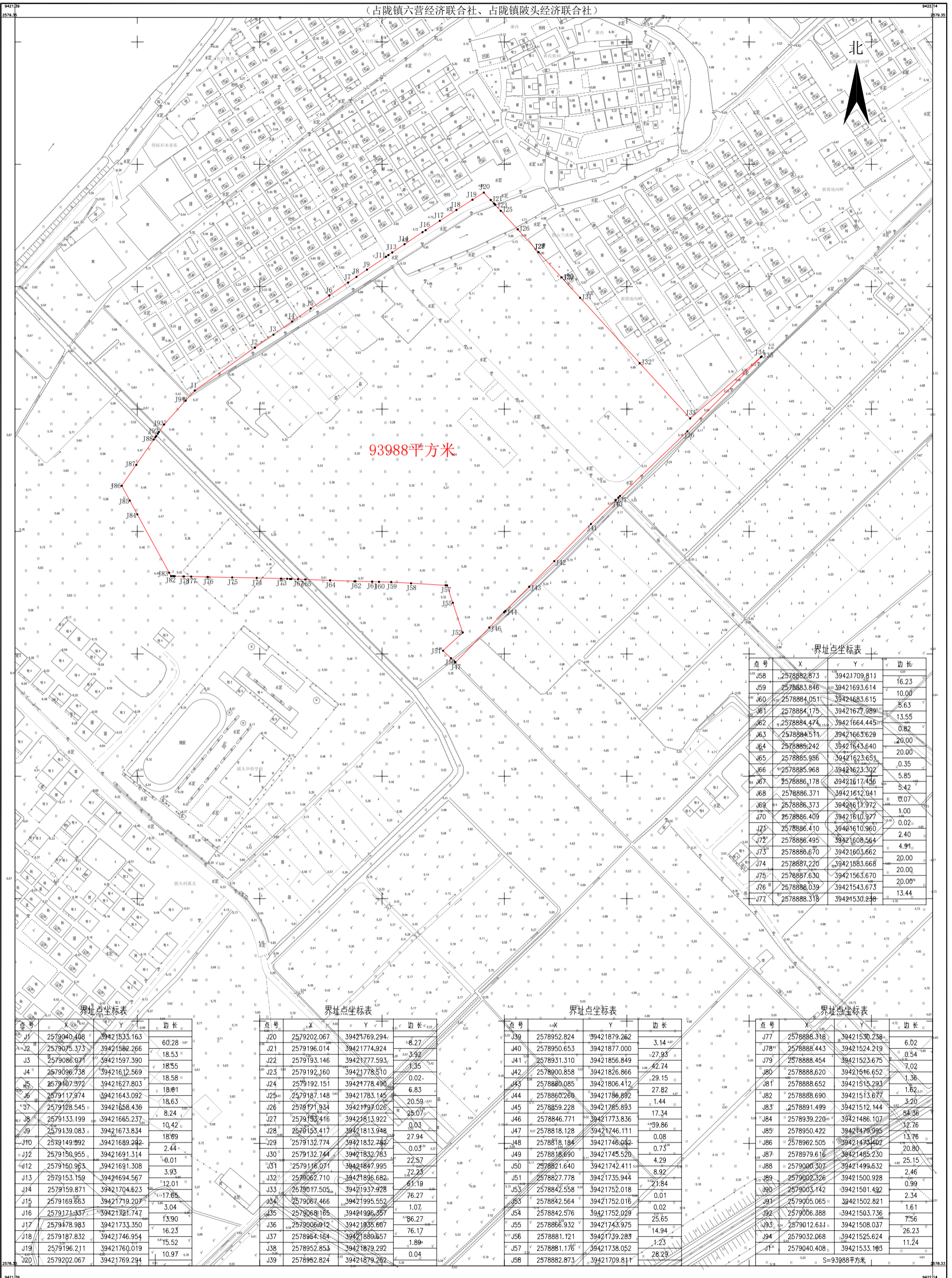


# 普宁市2023年度第三十一批次城镇建设用地图

(占陇镇六营经济合作社、占陇镇陂头经济合作社)



93988平方米

界址点坐标表

点号	X	Y	边长
J58	2578882.873	39421709.811	16.23
J59	2578883.846	39421693.614	10.00
J60	2578884.051	39421683.615	5.63
J61	2578884.175	39421677.989	13.55
J62	2578884.474	39421664.445	0.82
J63	2578884.511	39421663.629	20.00
J64	2578885.242	39421643.640	20.00
J65	2578885.956	39421623.651	0.35
J66	2578885.968	39421623.302	5.85
J67	2578886.178	39421617.436	5.42
J68	2578886.371	39421612.041	0.07
J69	2578886.373	39421611.972	1.00
J70	2578886.409	39421610.977	0.02
J71	2578886.410	39421610.960	2.40
J72	2578886.495	39421608.564	4.91
J73	2578886.670	39421603.662	20.00
J74	2578887.220	39421583.668	20.00
J75	2578887.630	39421563.670	20.00
J76	2578888.039	39421543.673	13.44
J77	2578888.318	39421530.238	6.02
J78	2578888.443	39421524.219	0.54
J79	2578888.454	39421523.675	7.02
J80	2578888.620	39421516.652	1.36
J81	2578888.652	39421515.293	1.62
J82	2578888.690	39421513.677	3.20
J83	2578891.499	39421512.144	54.36
J84	2578939.220	39421486.107	12.76
J85	2578950.422	39421476.995	13.76
J86	2578962.505	39421473.402	20.80
J87	2578979.616	39421485.230	25.15
J88	2579000.307	39421499.632	2.46
J89	2579002.326	39421500.928	0.99
J90	2579003.142	39421501.492	2.34
J91	2579005.065	39421502.821	1.61
J92	2579006.388	39421503.736	7.56
J93	2579012.611	39421508.037	26.23
J94	2579032.068	39421525.624	11.24
J95	2579040.408	39421533.193	

S=93988平方米

界址点坐标表

点号	X	Y	边长
J1	2579040.408	39421533.163	60.28
J2	2579075.373	39421582.266	18.53
J3	2579086.971	39421597.390	18.55
J4	2579096.738	39421612.569	18.58
J5	2579107.972	39421627.803	18.61
J6	2579117.974	39421643.092	18.63
J7	2579128.545	39421658.436	8.24
J8	2579133.199	39421665.237	10.42
J9	2579139.083	39421673.834	18.69
J10	2579149.992	39421689.242	2.44
J12	2579150.955	39421691.314	0.01
J12	2579150.955	39421691.314	0.01
J12	2579150.955	39421691.314	0.01
J13	2579153.159	39421694.567	3.93
J14	2579159.871	39421704.823	12.01
J15	2579169.653	39421719.207	17.85
J16	2579171.337	39421721.747	3.04
J17	2579178.983	39421733.350	13.90
J18	2579187.832	39421746.954	16.23
J19	2579196.211	39421760.019	15.52
J20	2579202.067	39421769.294	10.97

界址点坐标表

点号	X	Y	边长
J20	2579202.067	39421769.294	8.27
J21	2579196.014	39421774.924	3.92
J22	2579193.146	39421777.593	1.35
J23	2579192.160	39421778.510	0.02
J24	2579192.151	39421778.490	6.83
J25	2579187.148	39421783.145	20.59
J26	2579171.934	39421797.026	25.07
J27	2579153.416	39421813.922	0.03
J28	2579153.417	39421813.948	27.94
J29	2579132.774	39421832.742	0.03
J30	2579132.744	39421832.783	22.57
J31	2579116.071	39421847.995	72.23
J32	2579062.710	39421896.682	61.19
J33	2579017.505	39421937.928	76.27
J34	2579067.466	39421995.552	1.07
J35	2579068.165	39421996.357	86.27
J36	2579006.912	39421935.607	76.17
J37	2578964.164	39421880.657	1.89
J38	2578952.853	39421879.292	0.04
J39	2578962.824	39421879.292	

界址点坐标表

点号	X	Y	边长
J39	2578952.824	39421879.262	3.14
J40	2578950.653	39421877.000	27.93
J41	2578931.310	39421856.849	42.74
J42	2578900.858	39421826.866	29.15
J43	2578880.085	39421806.412	27.82
J44	2578860.260	39421786.892	1.44
J45	2578859.228	39421785.893	17.34
J46	2578846.771	39421773.836	39.86
J47	2578818.128	39421746.111	0.08
J48	2578818.184	39421746.052	0.73
J49	2578818.690	39421745.520	4.29
J50	2578821.640	39421742.411	8.92
J51	2578827.778	39421735.944	21.84
J53	2578842.558	39421752.018	0.01
J53	2578842.558	39421752.018	0.01
J53	2578842.558	39421752.018	0.01
J54	2578842.576	39421752.029	25.65
J55	2578866.932	39421743.975	14.94
J56	2578881.121	39421739.283	1.23
J57	2578881.176	39421738.052	28.29
J58	2578882.873	39421709.811	

界址点坐标表

点号	X	Y	边长
J77	2578886.318	39421530.238	6.02
J78	2578888.443	39421524.219	0.54
J79	2578888.454	39421523.675	7.02
J80	2578888.620	39421516.652	1.36
J81	2578888.652	39421515.293	1.62
J82	2578888.690	39421513.677	3.20
J83	2578891.499	39421512.144	54.36
J84	2578939.220	39421486.107	12.76
J85	2578950.422	39421476.995	13.76
J86	2578962.505	39421473.402	20.80
J87	2578979.616	39421485.230	25.15
J88	2579000.307	39421499.632	2.46
J89	2579002.326	39421500.928	0.99
J90	2579003.142	39421501.492	2.34
J91	2579005.065	39421502.821	1.61
J92	2579006.388	39421503.736	7.56
J93	2579012.611	39421508.037	26.23
J94	2579032.068	39421525.624	11.24
J95	2579040.408	39421533.193	

普宁市自然资源测绘队

2023年11月全野外数字化成图。  
2000国家大地坐标系。  
1985国家高程基准，等高距为1米。  
GB/T20257.1-2007国家基本比例尺地图图式  
第1部分：1: 500 1: 1000 1: 2000地形图图式。

1:3000