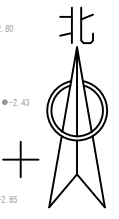
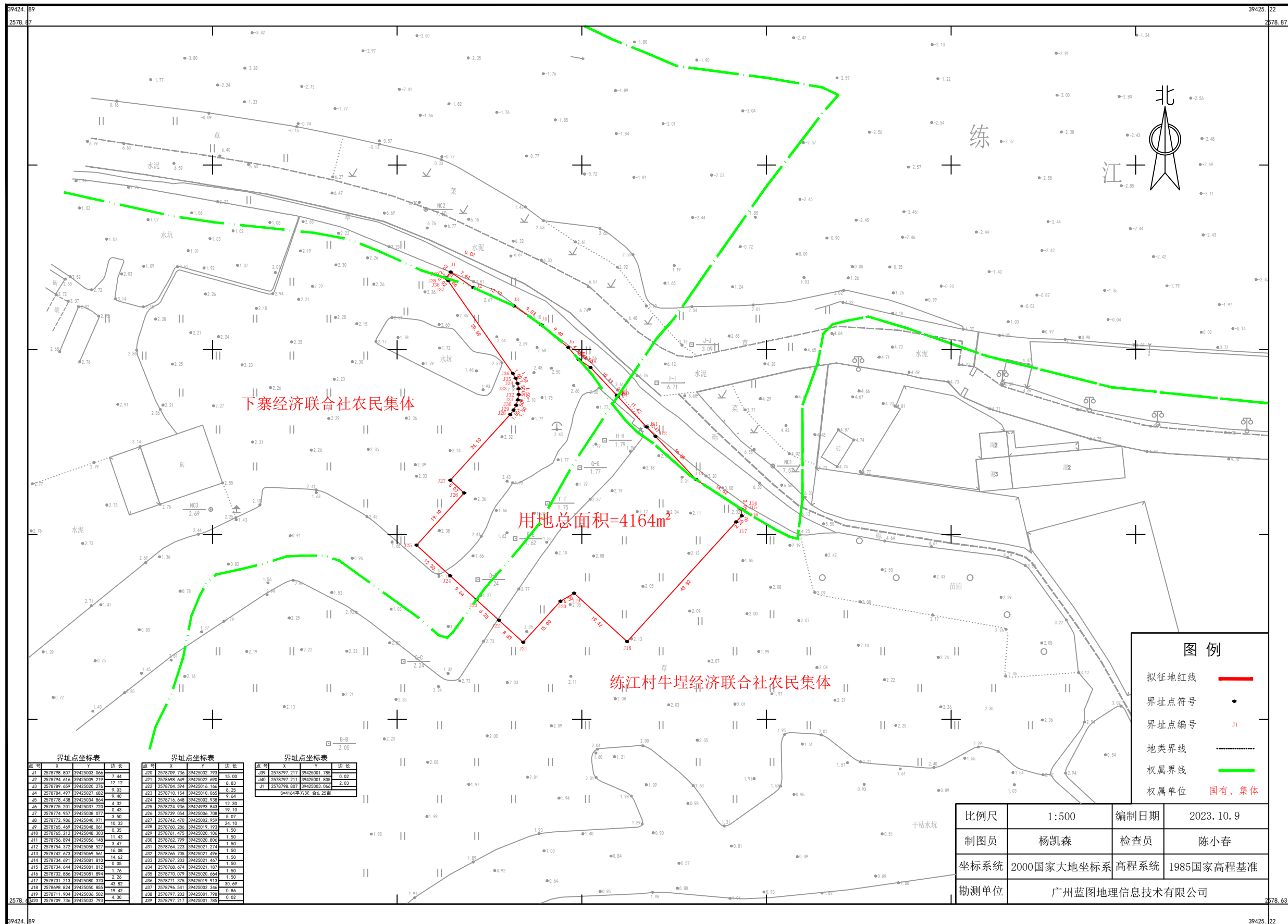


普宁市2023年度第十四批次城镇建设用地图

2578. 628-39424. 889



图例

- 拟征地红线 ——
- 界址点符号 ●
- 界址点编号 J1
- 地类界线
- 权属界线
- 权属单位 国有、集体

界址点坐标表			界址点坐标表			界址点坐标表		
点号	X	Y	点号	X	Y	点号	X	Y
J1	2578798.807	39425003.060	J20	2578769.736	39425002.793	J39	2578797.217	39425001.780
J2	2578794.616	39425009.219	J21	2578698.649	39425002.690	J40	2578797.211	39425001.800
J3	2578789.699	39425020.276	J22	2578704.694	39425016.166	J1	2578798.807	39425003.060
J4	2578784.497	39425007.462	J23	2578710.154	39425010.060	S=4164平方米 精度:25厘米		
J5	2578778.438	39425034.864	J24	2578716.648	39425002.938			
J6	2578775.201	39425037.720	J25	2578724.936	39424993.843			
J7	2578774.957	39425038.077	J26	2578739.054	39425006.708			
J8	2578772.886	39425040.974	J27	2578742.079	39425000.280			
J9	2578765.469	39425048.061	J28	2578760.286	39425019.193			
J10	2578765.212	39425048.303	J29	2578761.475	39425020.100			
J11	2578766.894	39425056.146	J30	2578762.799	39425020.800			
J12	2578764.372	39425058.487	J31	2578764.223	39425021.216			
J13	2578742.673	39425069.581	J32	2578765.705	39425021.490			
J14	2578734.691	39425081.810	J33	2578767.203	39425021.467			
J15	2578734.644	39425081.812	J34	2578768.674	39425021.187			
J16	2578732.886	39425081.494	J35	2578770.079	39425020.490			
J17	2578731.213	39425080.330	J36	2578771.376	39425019.911			
J18	2578698.824	39425056.850	J37	2578796.541	39425002.340			
J19	2578711.904	39425036.502	J38	2578797.202	39425001.798			
J20	2578709.736	39425002.793	J39	2578797.217	39425001.780			

比例尺	1:500	编制日期	2023. 10. 9
制图员	杨凯森	检查员	陈小春
坐标系统	2000国家大地坐标系	高程系统	1985国家高程基准
勘测单位	广州蓝图地理信息技术有限公司		